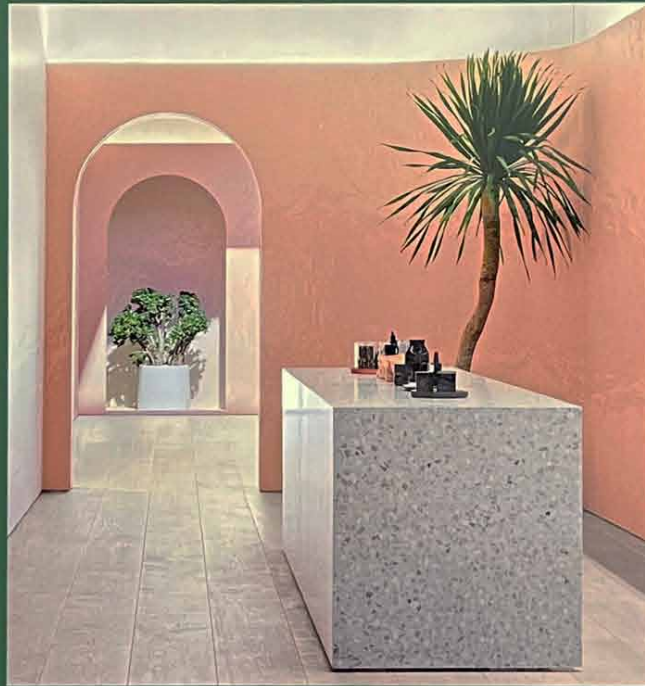


the healthy indoors



NEW CHALLENGES
NEW DESIGNS

FRAME

LACROIX CHESSEX- designed MEDICO- SOCIAL SUPPORT STRUCTURE FOR ELDERLY PEOPLE features a low profile and a prefabricated facade

ECHICHENS — The new Medico-social support structure for elderly people serves as a short-stay facility for patients who do not need full hospital care during their recovery, but who nevertheless benefit from specialised attention, care and monitoring before being discharged. The design by Geneva-based architecture studio Lacroix Chessex is more inspired by hospitality than by hospitals. As such, the scheme includes a hair salon and a tea-room, alongside a doctor's practice and other medical facilities.

The restrained, two-storey built volume is arranged around two patios, with individual rooms facing outward. Large floor-to-ceiling windows frame views of the surrounding countryside and village church. The structure and facade of the building are made using pale

prefabricated concrete elements, giving the low-slung complex a sense of robustness and regularity. Dual, planted patios offer more sheltered, communal spaces.

Inside, the pared-back material and colour palette of the exterior continues. The lobbies and corridors are covered in polished concrete, with maroon skirting boards, doors and window frames, while whitewashed walls and timber floors in the individual rooms create a calm atmosphere throughout. The second-storey spaces also feature exposed concrete rafters and timber ceilings as a nod to the region's vernacular architecture. The building exudes a sense of restraint and tranquillity to aid patients with their recovery while providing a sense of normalcy to those leaving medical care.



The building offers views of the surrounding countryside and the village church.

Chris G. G. G. G.



The structure and facade of the building is made using pale prefabricated concrete elements



Above Planted patios offer sheltered, communal spaces.

Opposite Pale prefabricated concrete elements make up the building's facade, giving it a sense of regularity.



Above Hospitality-focused, the centre features a tea-room offering patients a comforting space to recover.

Opposite The timeless design gives patients a sense of familiarity and regularity.

The design by Geneva-based architecture studio Lacroix Chessex is more inspired by hospitality than by hospitals

