

NEWSWISSARCHITECTURE

Edited by_ NATHALIE HERSCHDORFER
Texts by_ MAYA BIRKE VON GRAEVENITZ
Introduction by_ HUBERTUS ADAM



Thames & Hudson







ABOVE AND OPPOSITE All apartments extend from east to west and are linked by external galleries that act as communal areas for students to gather. PREVIOUS PAGES Arranged over ten floors, the projecting concrete slabs of each level filter noise from the adjacent railway.



006.6

STUDENT HOUSE OF THE GRADUATE INSTITUTE

Geneva
pp. 212-215

ARCHITECTS

LACROIX|CHESSEX
Rue des Cordiers 4
CH-1207 Geneva

Tel: +41 22 300 5407
Email: info@lacroixchessex.ch
www.lacroixchessex.ch

OTHER PARTICIPANTS

Civil Engineering: Ott B. and
Uldry C. Sàrl, Thomas Jundt Ingénieurs Civils
Electrical Engineering: Ingénieurs conseils Scherler
HVAC Engineering: Energgestion
Sanitary Systems: Schumacher Ingénierie
Building Physics Engineering: Sorane
Acoustics Engineering: AcouConsult Sàrl
Security: Ecoservices
Façade System: BCS
Surveying Engineering: Ney & Hurni
Landscape Architecture: Vogt Landschaftsarchitekten

CLIENT

Graduate Institute of International
and Development Studies

CONSTRUCTION DATES

2012

PROJECT DESCRIPTION

Visitors to Geneva who arrive by train are met with a surprise as they pull into the station. Towering over them like a monumental piece of sculpture is a long, gently curving building that backs on to the rail lines. This student housing, located in a rapidly changing area of central Geneva, forms part of the future Campus de la Paix development.

The building is arranged over ten floors and situated above the western end of a commuter parking facility, which provides its structural base. All the service areas and common areas are located on the ground floor, which is at street level, while apartments are arranged over the upper floors. All apartments extend from the east façade to the west and are accessed from external galleries, which also function as communal areas for students to gather.

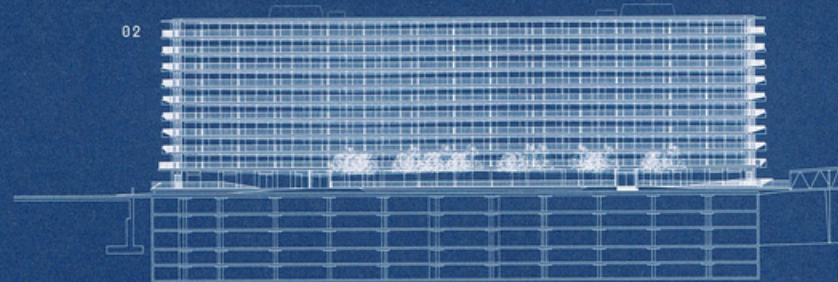
The ten projecting concrete floor slabs filter railway noise and also provide solar screening. As the building rises, the slabs become progressively narrower, visually lightening the structure. Their vertical superimposition adds interest to the western façade and accentuates the building's verticality. The simplicity of the structural design has enabled the architects to produce a sophisticated piece of architecture that dynamically responds to the physical constraints posed by the site.

01 Typical floor plan 02 Long section
03 South elevation 04 Cross-section

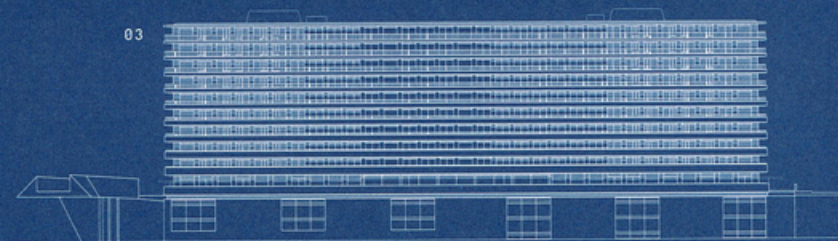
01



02



03



04

